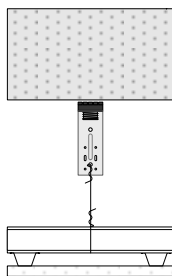
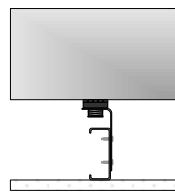
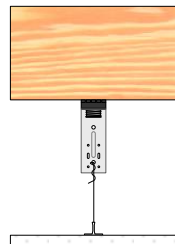
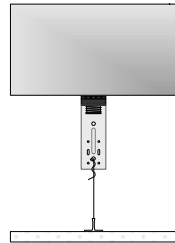
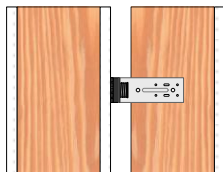
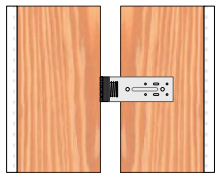
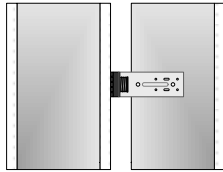
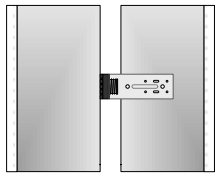




### RSIC-DC04

The **RSIC-DC04** series is a universal and versatile product line. The most common use is decoupling wall framing and ceiling systems. The RSIC-DC04 can be used in new construction or retrofit. The RSIC-DC04 should be used when items need to be acoustically decoupled for noise and vibration isolation.

A few examples of the possible uses for the RSIC-DC04 series of noise control clips: Dropped ceiling, decoupled brace or resilient connector for isolating walls, speaker mount isolators, exhaust/vent fan isolators, recessed lighting cover box isolators, projector mount isolators, electrical box, ceiling fan isolators, garage door motor isolation, and garage door rail isolation just to name a few.



Wood
Steel
Metal deck
Apartment
Retail
Conference Rooms

Concrete
Condo
Commercial
Recording Studio
Home Theater
Commercial theater

RSIC-DC04 specifications:	
Acoustical design load:	36 Lbs
Total deflection	3 mm
Double deflection	Yes (1.5 mm)
Made with Recycled content	Yes
Low VOC treated	Yes
Adjustable	4" screw flange
Cavity min	1/2"
Cavity Max	4-1/2"
Adjustment limit	4"
Use on Ceilings	Yes
Use on walls	Yes
New Construction	Yes
Retro Fit	Yes

**RSIC is the Low Cost, High Performance, Noise control Solution**